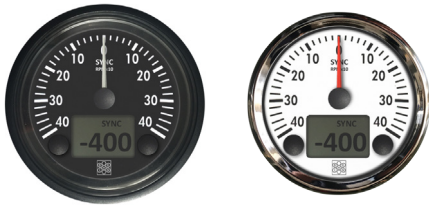


Engine RPM synchronism instrument

Approvato R.I.N.A. / R.I.N.A. approved



Lo strumento sincronismo misura la differenza giri tra due motori utilizzando un convertitore esterno dei segnali provenienti da sensori W alternatore. Disponibile con ghiera in plastica nera amovibile o ghiera in ottone cromato non amovibile.

The synchronism instrument measures the revolution speed difference between two engines using an external converter of the signals coming from W alternator. Available with removable black plastic bezel or not removable chrome plated brass bezel.

Modelli / Models				Made in Italy
Misura Range	Quadrante Nero RQ RQ Black Dial	Quadrante Bianco RQ RQ White Dial	Quadrante Nero CROMO CHROME Black Dial	Quadrante Bianco CROMO CHROME White Dial
± 400 rpm	VSG12410	VSG12110	VSG12310	VSG12010

Caratteristiche tecniche / Technical features	
Ingresso / Input	W Alternator
Diametro / Diameter	Ø85 mm
Alimentazione / Power supply	12/24 V
Illuminazione / Backlighting	Rossa / Red
Ambiente / Environment	-20 +70 °C - IP65