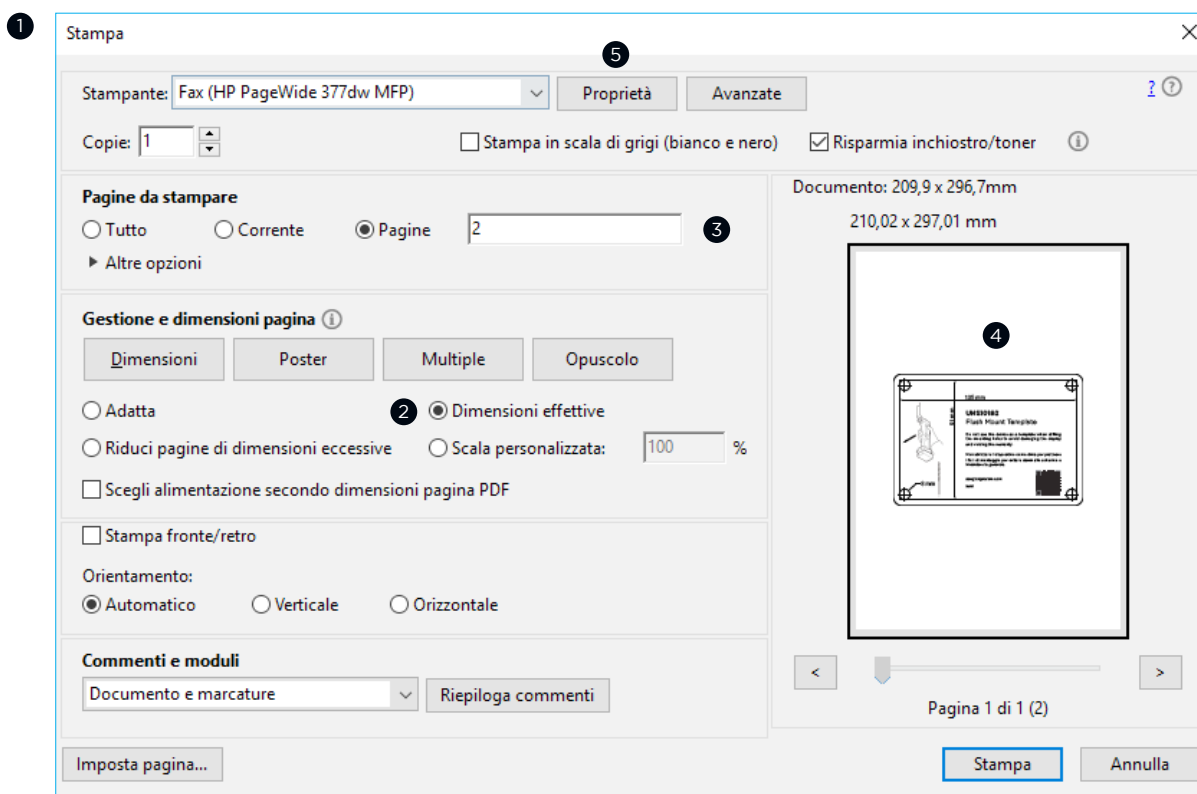




WARNING !

It is not recommended that you print a mounting template on your own. Use the template provided in the product box. If you print the mounting template, you must follow these instructions to accurately print a mounting template. Failure to follow these instructions may result in an incorrectly sized template and therefore an incorrect cutout on the boat mounting surface.



- 1 Select **File > Print**.
- 2 Select **Actual Size** in **management and page size**.
- 3 Select Page "2" in **pages to print**.
- 4 Verify that the paper size is larger than the template.
- 5 If the paper size is not large enough, click **Properties** and select a page size that is larger than the printing template.

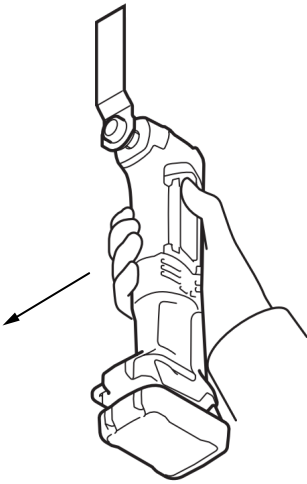
MORE INFORMATION

SAN GIORGIO S.E.I.N. is not responsible for any damage or expense resulting from an incorrectly cut mounting surface resulting from failure to follow these instructions.



183 mm

135 mm



8 mm



UNS10195

Flush Mount Template

Do not use the device as a template when drilling the mounting holes to avoid damaging the display and voiding the warranty.

Non utilizzare il dispositivo come dima per praticare i fori di montaggio per evitare danni allo schermo e invalidare la garanzia.

sangiorgiosein.com

21/03

