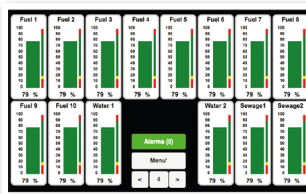
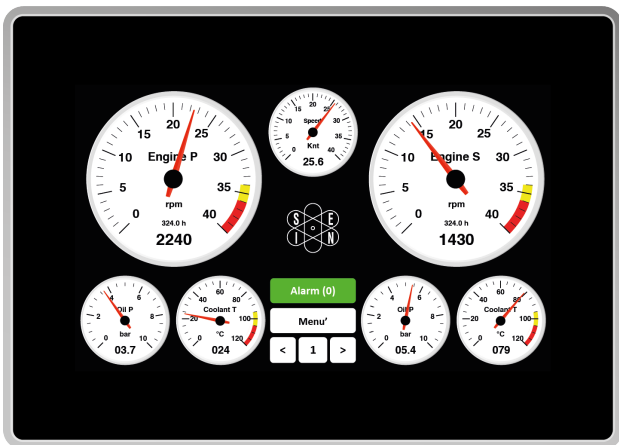


# 7" Monitoring and control system

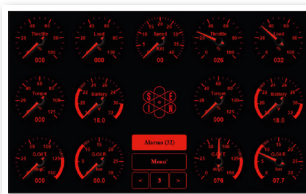
## UNS10195

High performance monitoring and control system specifically designed for naval, professional and pleasure boats applications. It offers a new 7" touch screen display optimized for sun visibility, a new design and many possibilities of connection to on-board apparatus and portable devices. The innovative "Flexible Hardware" electronics provides direct acquisition of many measurement sensors without additional signal converters. Three CAN Bus J1939 ports and one NMEA2000 compatible output make it the perfect device to use with multifunction navigation systems. Datalogger functionality with internal SD card. It can be customised and programmed via LAN, WiFi and USB interface.



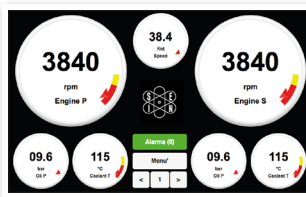
### Monitoring levels

Monitoring levels and bilges with bar indicator



### Customisable pages

Page with analog instruments in night mode



### Monitoring control

Monitoring up to four engines

## Technical features



Display	7" TFT LCD, 800 x 480 pixel, high brightness 1000cd, antiglare
Touch screen	Capacitive
CPU and memory	Advanced Hybrid CPU Dual Cortex A9 + FPGA, 1 GB RAM DDR3
Data memory	128MB Flash + 8GB SD card
Inputs-Outputs	8 x Analog inputs 0-300Ω 16 x Analog inputs 0-10V / 4-20mA 8 x Analog inputs NTC 0-100KΩ with autorange 8 x Analog thermocouple inputs 6 x Analog inputs 0-36V 3 x Frequency inputs W alternator / Pickup 8 x Digital ON/OFF inputs, active to ground 8 x Relay outputs, single contact max 500mA
Communication ports	4 x CAN Bus 2.0B / 1 x Ethernet / 1 x Wifi 802.11bgn 1 x USB OTG / 1 x NMEA0183 / 1 x RS232 / 1 x RS485
Power supply	9/36 V - 500mA average
Dimensions	200 x 143 x 76.1mm - Mounting hole 183 x 135mm
Environment	0 +55 °C ( -20 +70 °C on demand ) - IP65