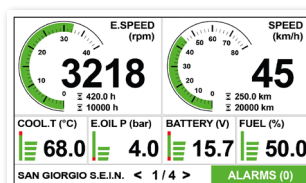
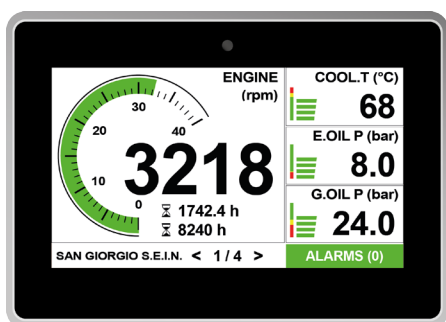


# 5" Multifunction display

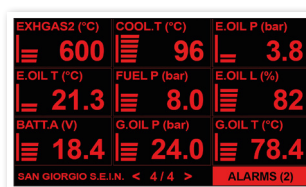
UNS10192

Multifunction display specifically designed for naval, professional and pleasure boats applications. It offers a 5" touch screen display with integrated ambient light sensor and special software designed for visibility in any light and operating condition. A selection of analog inputs and digital outputs allow direct acquisition of measure sensors without any additional signal converters. Two J1939 CAN Bus ports, one also compatible with NMEA2000 standard, can be used to interface multifunction navigation systems. It can be customised and programmed via USB interface.



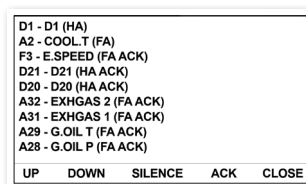
## Monitoring control

Monitoring up to two engines



## Customisable pages

Page with digital instruments in night mode



## Customisable pages

Page with bar indicators in day mode

## Technical features



Display	5" TFT LCD, 480 x 272 pixel, high brightness 900cd
Touch screen	Capacitive
Inputs-Outputs	4 x Analog inputs 0-10V / 4-20mA 4 x Analog inputs 0-300Ω 2 x Frequency inputs W alternator / pickup 5 x Digital inputs / outputs
Communication ports	2 x CAN Bus 2.0B 1 x NMEA0183 1 x RS232/485 1 x USB OTG
Power supply	9/36 V - 500mA average
Dimensions	144 x 100 x 69mm with harness
Mounting hole	135 x 91mm
Operating temperature	-20 +70 °C
Protection grade	IP65
Weight	540g
Environment	IEC60945